



The Capontree Veterinary Clinic, Borders Business Park, Longtown,  
Carlisle, Cumbria CA6 5TD • Telephone: 01228 791245  
Email: [mri@capontreevets.co.uk](mailto:mri@capontreevets.co.uk) • [www.capontreevets.co.uk](http://www.capontreevets.co.uk)

Easy access to  
MRI & CT



The Capontree Veterinary Clinic, Borders Business Park, Longtown,  
Carlisle, Cumbria CA6 5TD • Telephone: 01228 791245  
Email: [mri@capontreevets.co.uk](mailto:mri@capontreevets.co.uk) • [www.capontreevets.co.uk](http://www.capontreevets.co.uk)

Burgess Diagnostics National Network



## “The specialists in our field”

Burgess Diagnostics are uniquely positioned to provide access to the UK's only dedicated mobile veterinary MRI and CT network.

With many years' experience in developing cross-sectional imaging services, the team, consisting of highly skilled radiographers and veterinary surgeons have a wealth of expertise and experience in all aspects of MRI and CT scanning.

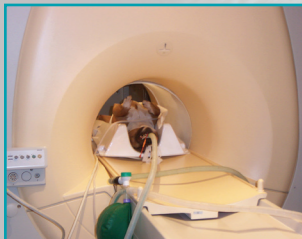


## UK Coverage

With six of the most advanced MRI and CT systems in the world, Burgess Diagnostics operates on a national level and aims to service your MRI and CT requirements at your convenience.

You may wish to only refer an occasional case for a scan. In these instances we have established many partnership sites within the Burgess scanning network across the UK, such as our joint venture with Capontree Vet Clinic, Longtown. To make scan referrals, we can provide you with forms to present prior to the scan date for you to note your requirements. These can be printed from our website [www.burgessdiagnostics.com](http://www.burgessdiagnostics.com), or from the Capontree Website at [www.capontreevets.co.uk](http://www.capontreevets.co.uk).

Both websites will provide the information you require.



## Magnetic Resonance Imaging

Magnetic Resonance Imaging or MRI is an imaging process, which has established itself as the dominant diagnostic investigation process in human medicine. It is unparalleled in the investigation of soft tissues due to its superior contrast sensitivity and tissue discrimination.

This, combined with imaging in any plane and without the associated x-radiation makes MRI the optimum method of investigation in the majority of clinical cases.

***This invaluable diagnostic tool is now available to the veterinary profession.***

For accurate diagnosis and lesion localisation, MRI is now the investigation of choice in all neurological, joint and spinal disease processes. With multi-planar capabilities, various MRI sequences and the latest contrast agents, tissue and disease characterisation will allow accurate identification and case treatment/management.

### Images in multiple planes

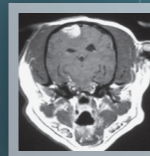
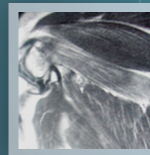
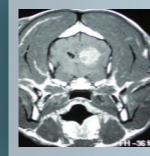
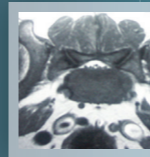
**Images of the highest quality and clarity**

**Totally non-invasive: no use of radiation**

**Safe, affordable and readily accessible**

**Superb diagnostic tool with wide range of applications:**

- CNS
- Spine
- Joints



## Computed Tomography

Computed Tomography or CT is a clinical imaging procedure which uses x-rays to produce a cross-sectional, or 'slice' image of the inside of the body. The process can show bones, as well as surrounding soft tissues such as muscle and blood vessels with great clarity.

***CT imaging produces a volume of data which can be manipulated electronically to allow reformatting in multiple planes.***

Our CT systems are able to scan large areas of the body in one continuous operation quickly and can deliver large numbers of images to aid in the diagnosis of many conditions, including neoplasm, cardiovascular disease, infectious disease, trauma and musculoskeletal disorders.

- **Images in multiple planes**
- **Images of the highest quality and clarity**
- **Safe, affordable and readily accessible**
- **Super diagnostic tool with wide range of applications:**
  - Thorax
  - Joints
  - Osseous disease
  - Angiography

